

Quick Guides:

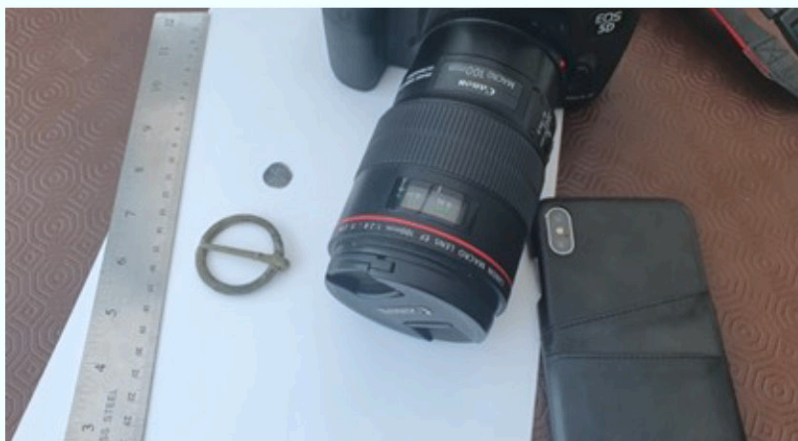
Photographing finds for the FLO

By Emma Pierce -

Self-recorder Emma Pierce talks photographing finds in this useful guide, perfect for when you need to send pictures to the FLO!

Begin by setting up the area in which you will photograph your finds. Make sure you have a flat surface that you can set up your equipment on. I use my dining table which is in the conservatory and it's full of natural light, so I don't need additional lighting. If you need to set up additional lighting, adjustable lamps with white bulbs can be great for this - place your lamp above and slightly to the side of your find - be careful to not cause harsh shadows. If you have harsh shadows, move the lamp away slightly. Placing a lamp on top of some books can be an easy way to move the light away from the find.

Place your find on top of your white background and next to your scale, then you are nearly ready to begin.



Things you will need:

- A camera (smartphone/compact/DSLR)
- A Scale (can be printed or use rulers)
- A clear white background (I'm using A4 printer paper)
- A light, or a naturally well-lit area
- A tripod or a very steady hand
- Your finds!



Smartphone cameras and compact cameras can either be handheld or placed onto a tripod. Photos need to be clear and not blurry so that the FLO can work out all of the important details from your find.

When using a smartphone or compact camera, place your camera directly above your object and ensure the phone is parallel to your table. Make sure your object is completely in focus by tapping the object on your screen, or by half pressing the button on your compact camera until you either hear a beep to tell you it's in focus, or a green focus square appears on your screen.

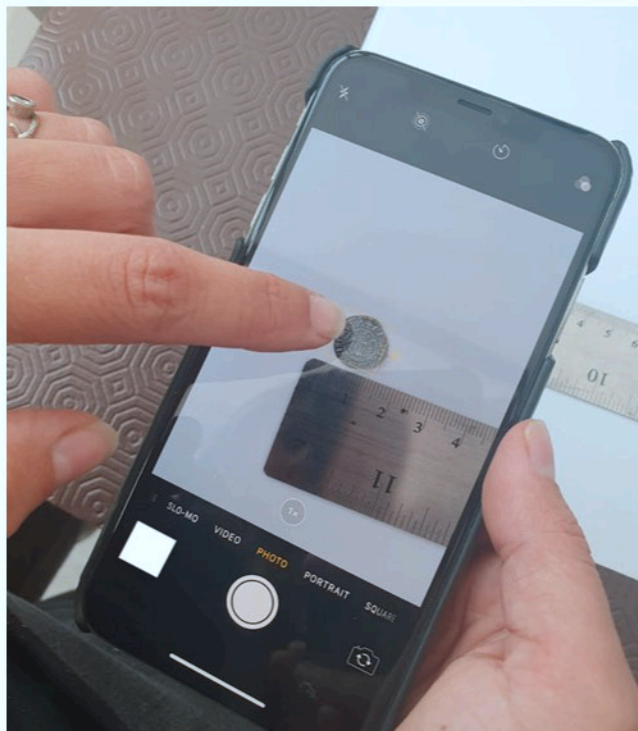
Do not use the zoom function on your device, if you need to move closer/away from your object, do this manually.

Make sure you can see both your object and your scale - then you can take the photo.

You could set up a timer, so the camera will take the photo for you while you hold it or while it is on the tripod.

Take a couple of photos of each side of your object, each time try to keep the camera at the same height distance from your find. By taking a couple of photos, you can review them at the end for your best, in focus, shot.

If you are using a DSLR camera, a tripod is highly recommended as these cameras can be heavy to hold and you don't want shaky, blurry photos!



DSLRs can be large and bulky, so make sure your tripod is strong and sturdy enough to hold it directly above your object – not to the side, not at an angle, directly above your object and scale.

If you have your DSLR and tripod set up be careful where you set up a light, as you do not want any accidental shadows being cast across your find.

Again, do not use the zoom function on your device, make sure you move the camera manually and then re-check your object is in focus. Once you are ready, take your photos.

Take a couple of each side of your object – all from the same distance. You can then review your photos before you send them to the FLO, to make sure you are sending your best, in focus, photos.

Now you have your photos you just need to send them to the FLO, email: FLO@kent.gov.uk. During the lockdown and recovery period we are recording some finds (coins and other flat objects) via email, so do include the findspot and measurements (diameter or width/length and weight) to one decimal place!