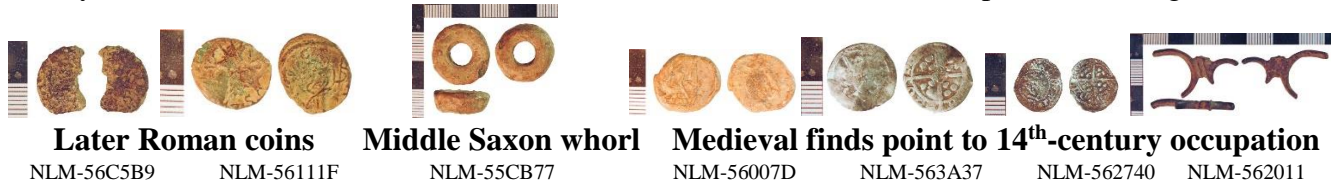


Finds on your Doorstep – 2000 years of life in Luddington and Haldenby - finds recorded on the Portable Antiquities Scheme Database (search for finds.org.uk) – by Martin Foreman, Finds Liaison Officer for North Lincolnshire

From Roman times to the end of the Middle Ages (AD 43 – 1500) 19 records

Before Drainage, Luddington was the northernmost of the islands of the Isle of Axholme, defined by the old course of the river Don on its northern and western sides. In the 17th century, the river was diverted, and its floodplain was subsequently drained by long straight dykes. The post-medieval practice of warping, a process of controlled inundation intended to fertilise fields, may mask early deposits. Earlier objects have been brought to light by ditching, and perhaps other circumstances, as at Haldenby Park and near Haldenby Hall. Finds from Luddington itself may mark higher ground which initially attracted settlement, and subsequently escaped alluviation.

Haldenby Park produces Roman, Anglo-Saxon, and Medieval finds. These were all associated with the nearby course of the old river River Don. Medieval coins date the later occupation of a long-established site.



Medieval Luddington has produced objects of 13th-century or later dates, all found around its outskirts.



A Middle Saxon spindle whorl comes from Haldenby Grange. Weights, strap fittings and a coin of Edward III are from near Haldenby Hall; but also next to a dyke whose digging may have brought them to light.



The Post-Medieval period (1500-1900) 34 records

Post-medieval finds suggest the longstanding occupation at Haldenby Park survived the 17th-century alteration of the course of the river Don. Buttons and dress fittings are the most common categories of objects from later activity here, and were deposited into the 19th century. Finds from near Haldenby Hall which might come from its site begin with those of 16th or 17th-century date, though later objects are also present. The village of Luddington produces a coin of Elizabeth I (1558-1603) from before the Drainage, and much Georgian small change. The 17th-century evidence is rare, and may be sealed below warp soils.

Finds from Haldenby Park suggest occupation from the reign of Queen Mary (1553-1558), with other finds of the 18th and late 19th century. The intervening period of the Drainage is not represented by finds here.

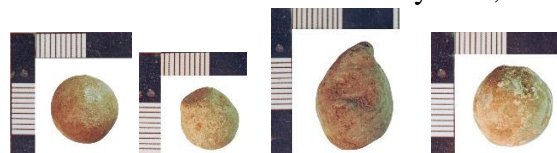


Finds on your Doorstep – 2000 years of life in Luddington and Haldenby - finds recorded on the Portable Antiquities Scheme Database (search for finds.org)

The Post-Medieval period (1500-1900) continued

The Drainage of the Isle of Axholme was a prolonged and contested process implemented through the 17th century. Enormous activity by a labour force numbering in the hundreds was required to divert rivers and drain wetlands. Their labours have left rectilinear traces across the landscape of the parish, with an interlinked system of dykes and drains. There are, however, very few finds dated to this period. This may be because workers may have lived elsewhere. It may also be the result of the later 17th-century adoption of warping as a means of improving soil fertility by controlled flooding, covering earlier soils.

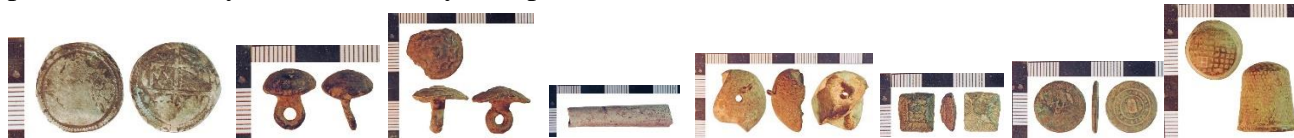
Lead shot from pistols or farmers' 'rook and rabbit' guns come from Haldenby, the northern part of the parish. The find-spots all have nominal connections to Haldenby Hall, and may point to shooting for sport.



Lead shot from shooting on the Haldenby estate

NLM-5ED258 NLM-4229D3 NLM-4103DA NLM-55EEBA

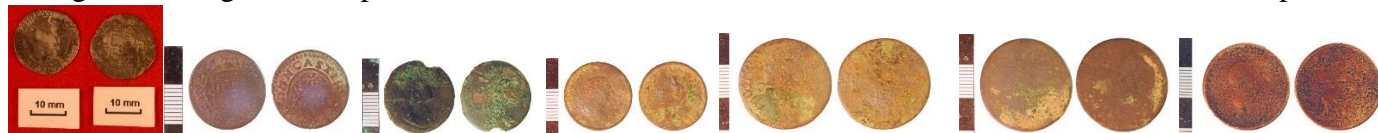
Finds from north-east of Haldenby Hall may have originated from that centre. A coin of Elizabeth I and one-piece buttons may be from its early occupation. Other finds here were of late-18th to later-19th-century date.



Tudor and Stuart finds from near to Haldenby Hall; an occupation continued into Victorian times.

NLM-4148AE NLM-410C55 NLM-4114C7 NLM-413DE9 NLM-4221DE NLM-4132FC NLM-4235C0 NLM-412700

Objects from around Luddington include a coin of Elizabeth, a rare – for here - 17th-century token, and Georgian farthings and halfpennies. Small transactions and losses were common at the heart of the parish.



Silver coin & 17th-century token

NLM-DBA1C8

NLM-547603

NLM-5650E2

Georgian farthings and halfpennies from Luddington village

NLM-74C8DD

NLM-74D867

NLM-C972BF

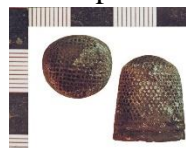
NLM-F4DD77

Occupation at Haldenby Grange has left some evidence dateable to the early and later 19th century from its place in a new man-made landscape. Earlier activity here had taken place on the bank of the old river Don.



Georgian halfpenny

NLM-5EE16E



Victorian thimble

NLM-5EDA03